

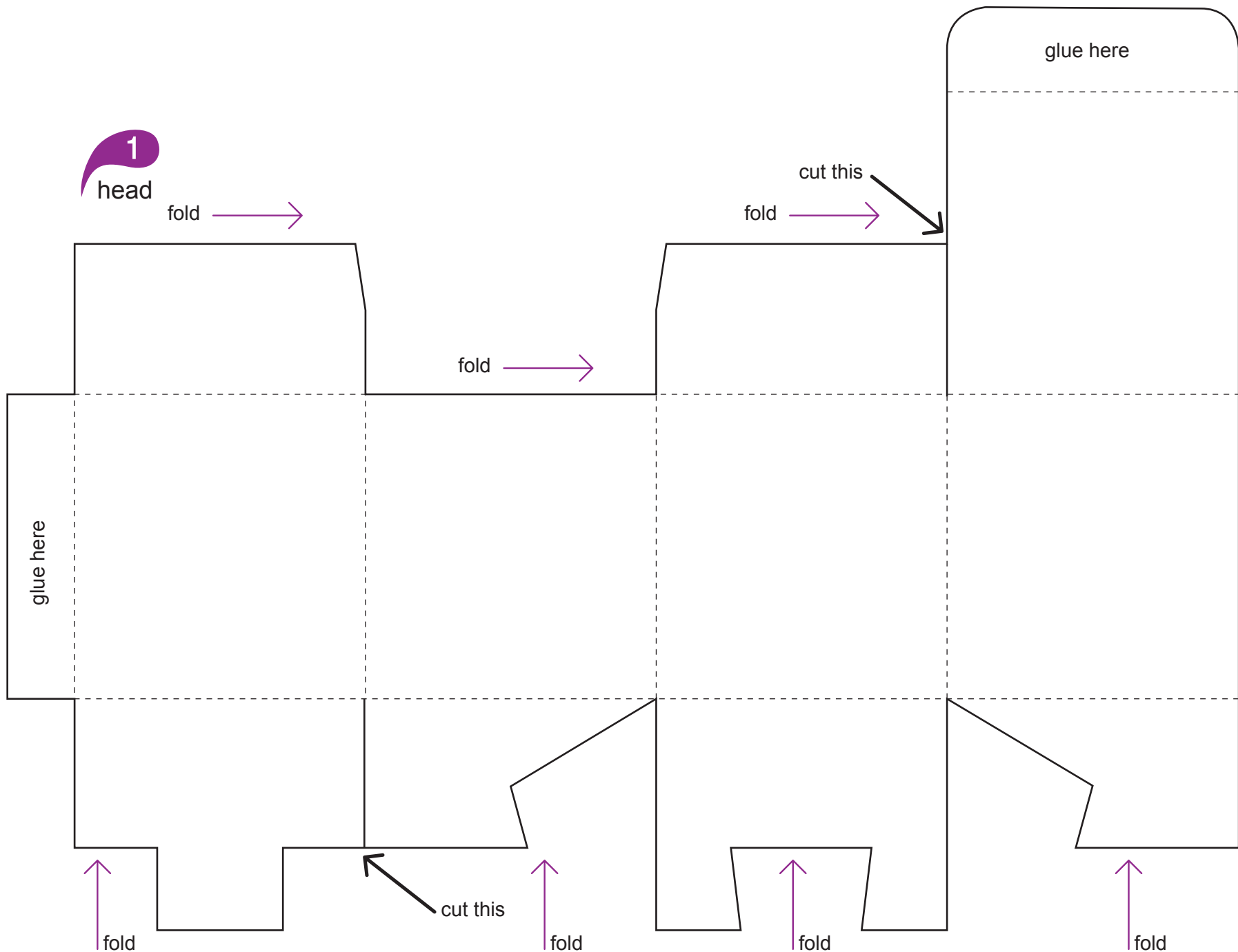
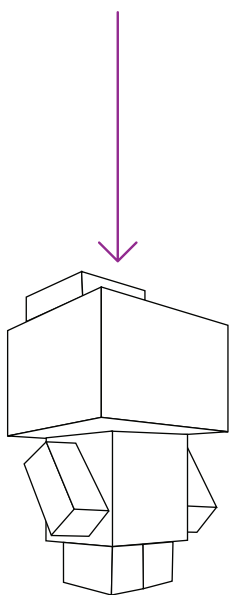
you found
the box.
we'll get
you out.

Make your
own paper doll:

- 1>> cut out the attached figures (4 total).
- 2>> fold along the dotted lines.
- 3>> paste indicated flaps inward.
- 4>> paste the head and body together.
- 5>> paste the hands and body together.
- 6>> decorate your doll.
- 7>> email us a photo of your doll to:
cl3v3r@eripio.com

fold

cut



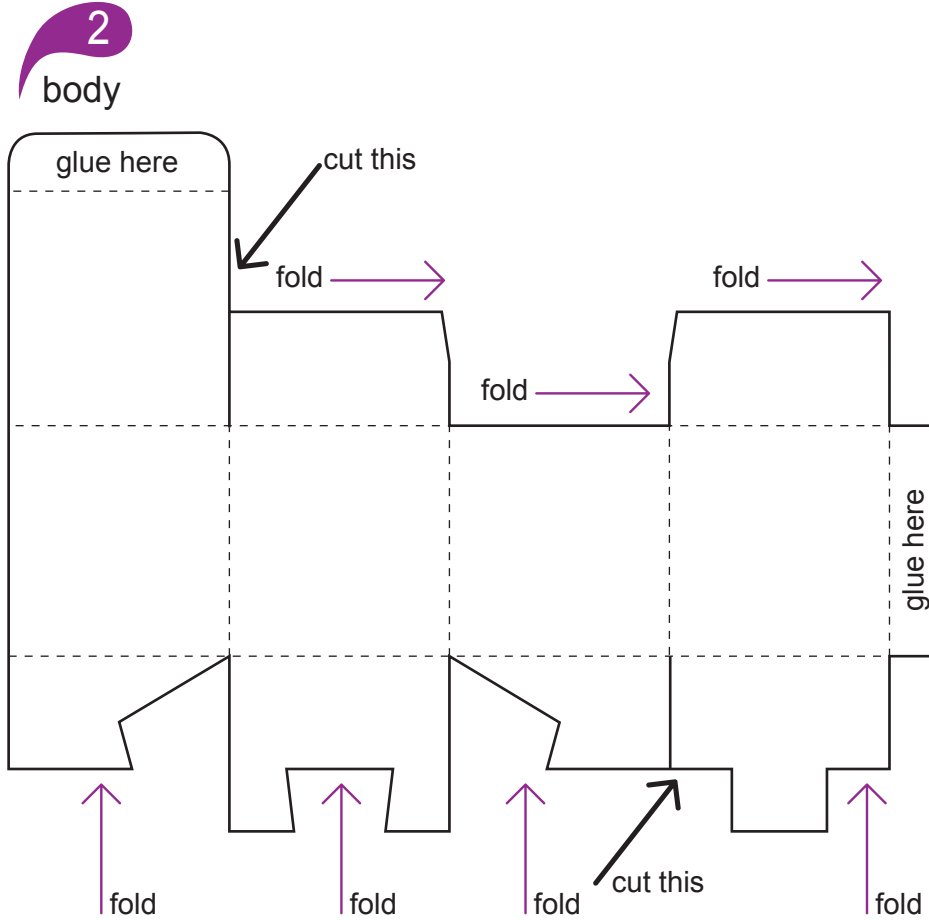
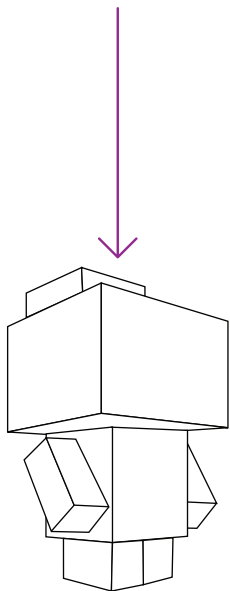
you found
the box.
we'll get
you out.

Make your
own paper doll:

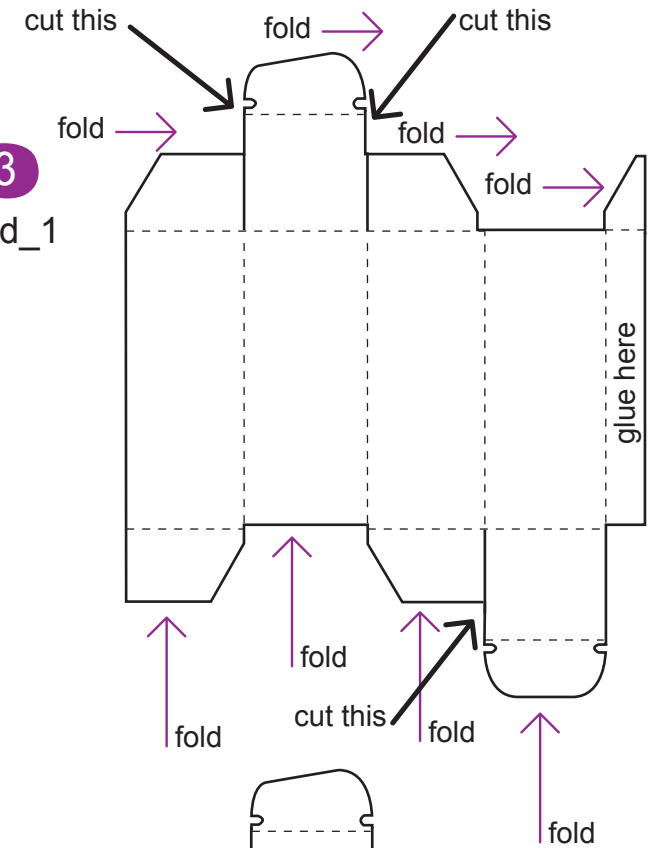
- 1>> cut out the attached figures (4 total).
- 2>> fold along the dotted lines.
- 3>> paste indicated flaps inward.
- 4>> paste the head and body together.
- 5>> paste the hands and body together.
- 6>> decorate your doll.
- 7>> email us a photo of your doll to:
cl3v3r@eripio.com

fold

cut

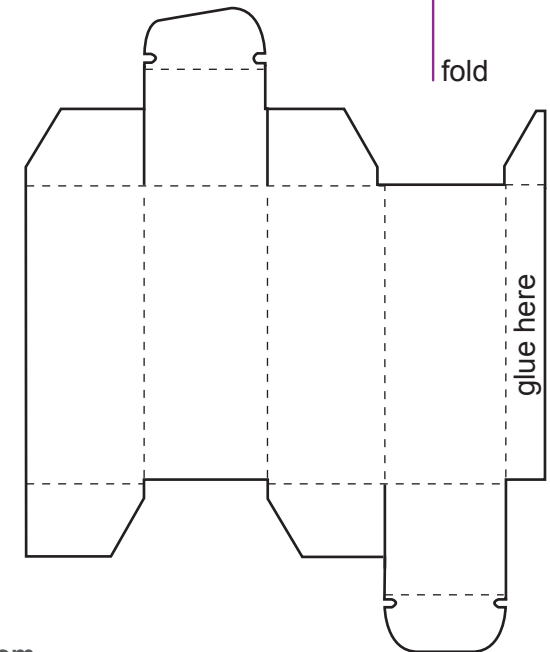


3
hand_1



4
hand_2

[same like
hand_1]



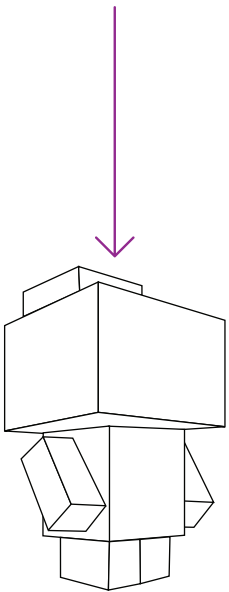
you found
the box.
we'll get
you out.

Make your
own paper doll:

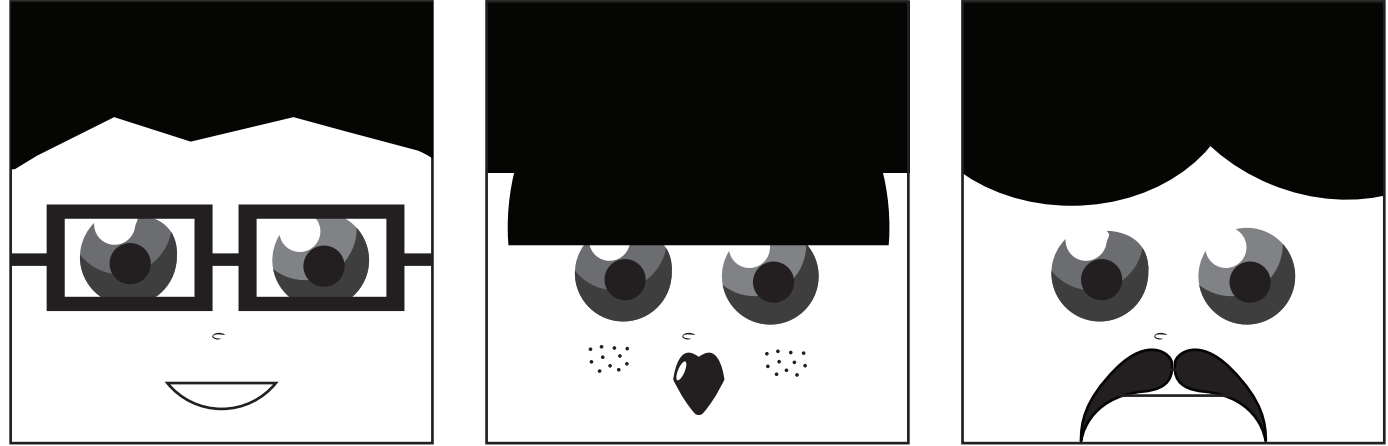
- 1>> cut out the attached figures (4 total).
- 2>> fold along the dotted lines.
- 3>> paste indicated flaps inward.
- 4>> paste the head and body together.
- 5>> paste the hands and body together.
- 6>> decorate your doll.
- 7>> email us a photo of your doll to:
cl3v3r@eripio.com

fold

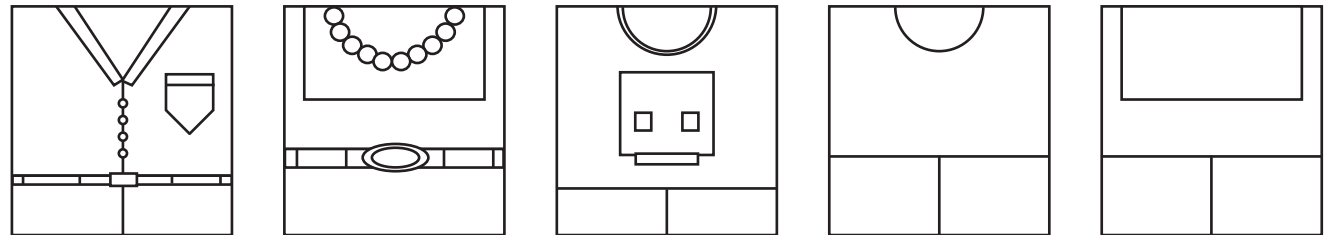
cut



5
faces



6
bodies



7
accessories

